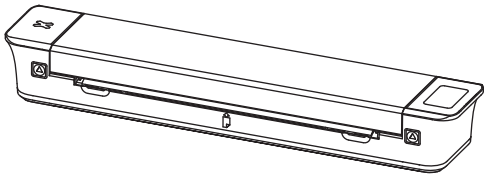


# 快速入门指南

## OZERX

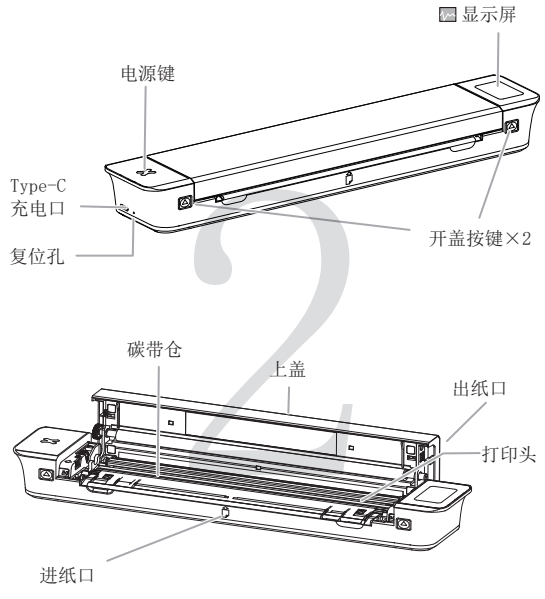


### 1. 产品介绍

#### 1.1 包装清单

- 打印机 ×1
- 快速入门指南 ×1
- 绒布袋 ×1
- Type-C数据线 ×1
- USB转Type-C转接头 ×1
- Type-C数据线和USB转接口已放入绒布袋内
- 碳带支架 ×1
- 碳带 ×1
- ① 碳带已放置在打印机内部

#### 1.2 打印机部件说明



### 2. 快速使用

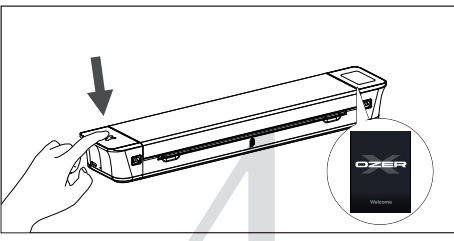
#### 2.1 App下载

方法一：请在App Store® 或 Google Play™ 搜索“Quick Stencil”应用程序，并下载安装。

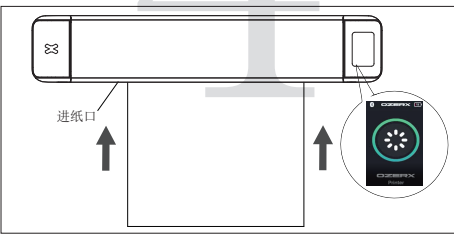


#### 2.2 装纸指引

01 长按电源键3秒开机，直到打印机显示屏亮起



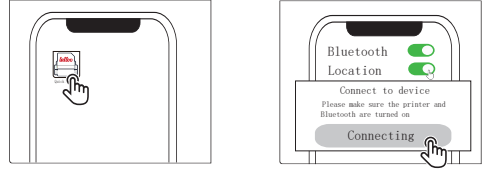
02 取出单张纹身纸，将纹身纸平整插入进纸口，直到打印机自动吸纸，显示屏呈“准备就绪”状态，装纸完成



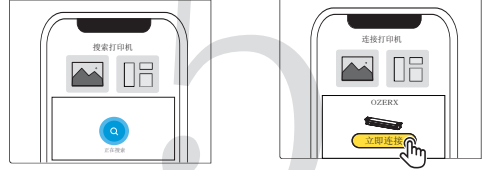
① 单张纹身纸不区分正反面，如机器内已放置碳带，可直接插入打印机使用

#### 2.3 移动设备使用指引

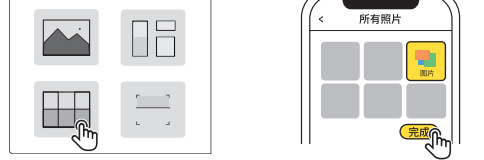
01 打开“Quick Stencil”App 02 蓝牙连接



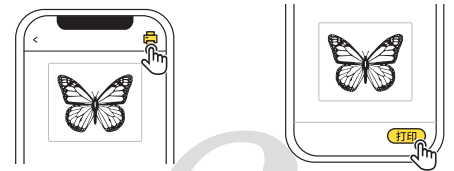
03 搜索打印机中 04 点击【连接】



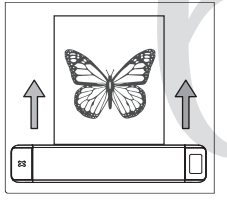
05 打印机连接成功，点击【图片分割】 06 选择需要打印的图片



07 编辑您的第一张图片，编辑完成后点击【打印】 08 确认图片预览效果，点击【打印】

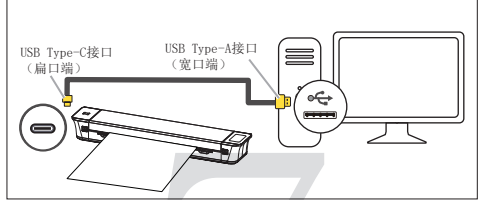


09 打印完成



#### 2.4 电脑端使用指引

01 请确认打印机已经开机，使用原装Type-C数据线将其连接到计算机。

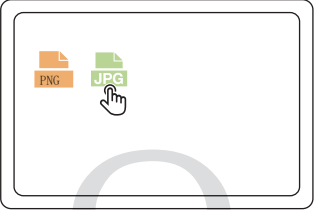


① 如您的电脑为Type-C接口，可使用随机附赠的转接头转换接口，转接头Type-C端需插入电脑端。转接头为单向传输，转接头的Type-C端插入打印机端会出现无法充电或无法传输数据的异常

02 请访问ozerquickstencil.com，下载安装驱动

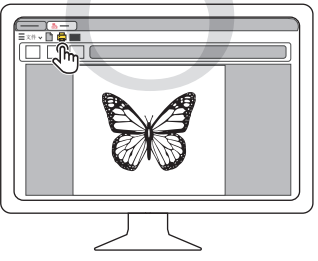


03 选中并打开需要打印的文件

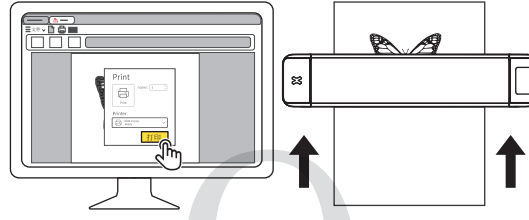


① 打印机支持JPG、PNG等格式文件打印

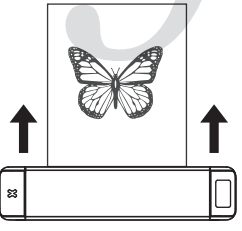
04 点击【打印】



05 选择OZERX Printer打印机，点击【打印】，开始打印



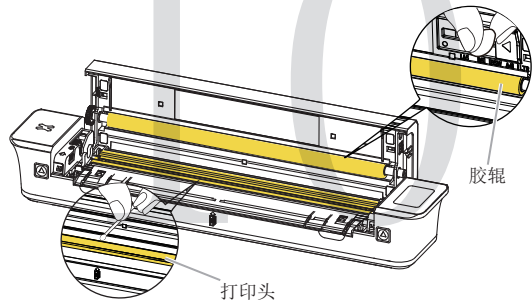
06 取出打印完成的纹身纸，配合纹身膏（需自行购买），开始使用



### 3. 清洁保养

- ① 执行任何清洁维护前，请确保打印机电源断开
- ② 如果刚打印完毕应等待半小时后打印头完全冷却  
打印出现空行、字迹模糊或漏字，可能是由于打印头上的污垢导致，请进行以下操作

- 01. 用棉签蘸取酒精或使用酒精棉球（应拧干），左右擦拭各5个来回，擦除胶辊及打印头表面的灰尘、污点等
- 02. 等待5~10分钟，酒精完全挥发后，合上上盖，清洁完成。

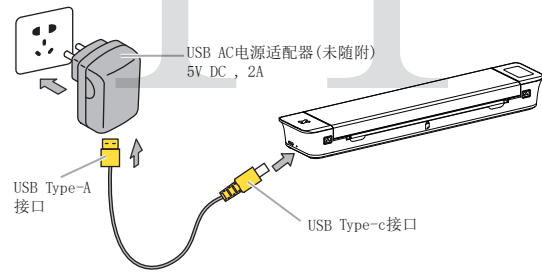


**⚠️ 打印头 警告:热零部件!触摸该零部件时会烫伤手指,关闭电源后等待半小时才能触摸零部件**

### 4. 充电说明

- 01. 请自行准备5V DC/2A的直流Type-A接口电源适配器
- 02. 请将USB充电线Type-C（扁口端）连接到OZERX打印机的充电接口；将USB充电线Type-A（宽口端）连接到电源适配器Type-A接口
- 03. 连接完成并插入插座后，请检查打印机指示灯状态，打印机关机状态下，显示屏呈“”状态；打印机开机状态下，显示屏右上角呈“”状态
- 04. 请至少充电20分钟，以满足快速使用；充电4小时即可完成充电，或直至显示屏右上角呈“”状态
- 05. 充电过程中，打印机会产生温度变化，请勿将打印机放置在棉麻等材质的物品上充电
- 06. 充电完成后，请及时拔除充电器

① 请勿在充电时使用打印机  
充电时使用打印机，可能会影响充电速度、打印效果和电池使用寿命



### 5. 更多帮助

#### 5.1 按键说明

按键类型	操作	功能
电源键	长按3秒	开/关机
	开机状态下，双击	打印自检页内容

#### 5.2 打印机状态说明

显示屏状态	说明	操作指引
	正常使用	/
	未安装碳带	放入碳带
	未放入纸张	放入纸张
	打印机开盖	合上上盖
	打印机过热	暂停打印5-10分钟

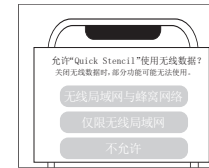
### 5.3 打印机电量说明

显示屏状态	说明	操作指引
	充满电	/
	电量大于50%	/
	电量小于50%	/
	电量小于20%	充电1小时（若您急需使用，请至少充电20分钟）
	开机状态下充电	/
	关机状态下充电	/
长按电源键3秒，显示屏不亮	电量耗尽	充电4小时

#### 5.4 权限获取说明

##### 01 IOS用户须知

- App获取网络权限
- App获取蓝牙权限



##### 02 Android用户须知

- App获取蓝牙权限

- 手机系统蓝牙获取搜索附近蓝牙设备权限



① Android 12系统及以上需允许App搜索附近蓝牙设备；Android12系统以下需开启GPS权限后才能搜索附近蓝牙设备

- 手机系统蓝牙配对提示

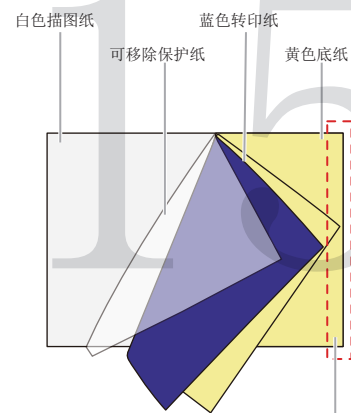


① 无需勾选“允许访问您的通讯录和通话记录”，直接点“配对”即可

### 6. 更多纸张类型

#### 6.1 四联纹身纸+碳带空支架组合

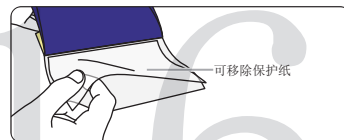
##### 01. 四联纹身纸介绍



① 此处为纸张顶部粘合处，请勿撕坏！

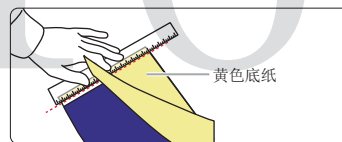
##### 02. 使用前准备

###### 01 取出纹身纸，移除保护纸

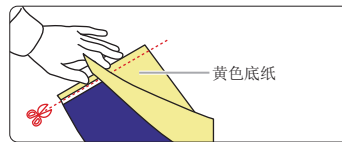


###### 02 使用直尺或剪刀将黄色底纸沿顶部粘合处裁剪

###### Method 1:



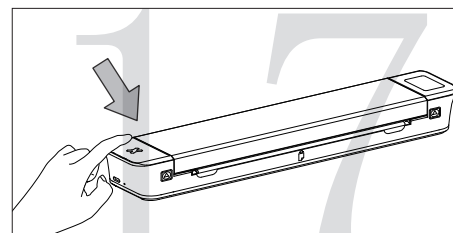
###### Method 2:



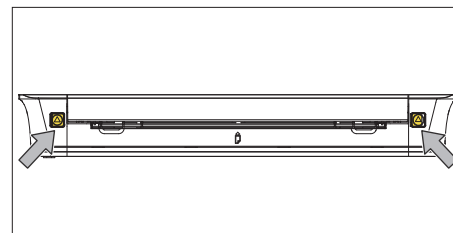
① 裁剪时请注意纸张粘合处需保持完整

##### 03. 装纸指引

###### 01 长按电源键3秒开机，直到指示灯亮起

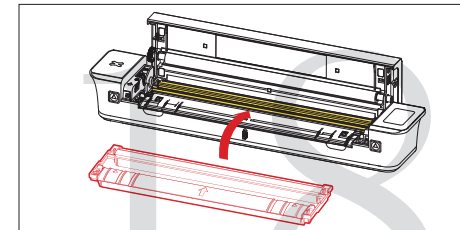


###### 02 双手同时按下开盖按键，打开上盖

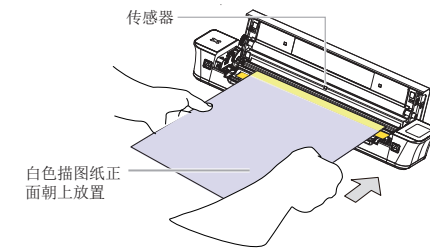


① 单张纹身纸不区分正反面，如机器内已放置碳带，可直接插入打印机使用

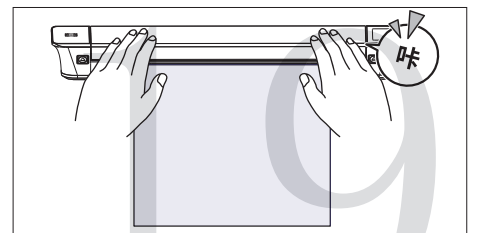
##### 03 取出套装中配置的碳带空支架，按图示方向放入碳带仓中



##### 04 将白色描图纸朝上，沿着出纸口方向平整放入打印机。确保纹身纸覆盖传感器。

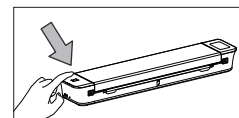


##### 05 放下上盖，双手放在上盖两端，同时摁下，听到“咔”一声，合盖完成

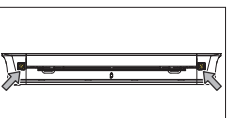


#### 6.2 卷纸+内置碳带支架组合

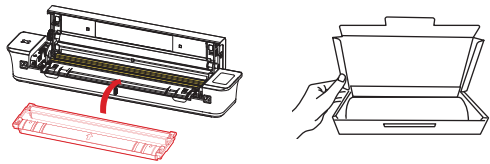
##### 01 长按电源键3秒开机，直到指示灯亮起



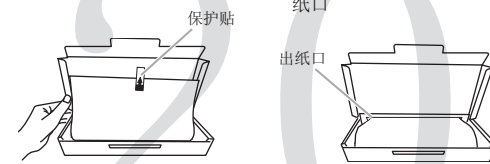
##### 02 双手同时按下开盖按键，打开上盖



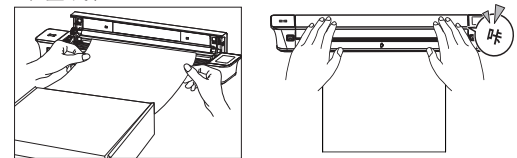
- 03 打印机内放入套装中附赠的碳带支架
- 04 取出全新纸卷套装，打开套装



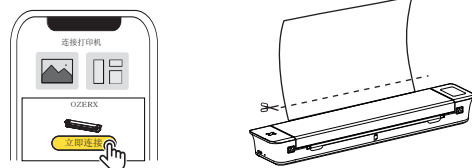
- 05 移除卷纸上的保护贴
- 06 将纸卷的纸头穿过配件盒出口



- 07 将配件盒放置到打印机进纸口处，从配件盒出口处将纸头拉出，与显示屏位置平齐
- 08 放下上盖，双手放在上盖两端，同时摁下，听到“咔”一声，合盖完成

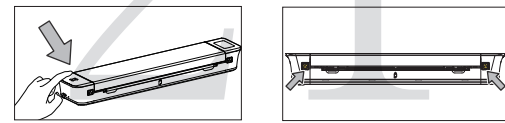


- 09 连接手机APP或电脑驱动，开始打印
- 10 打印完成后，使用剪刀从出纸口处裁剪打印完成的纸张

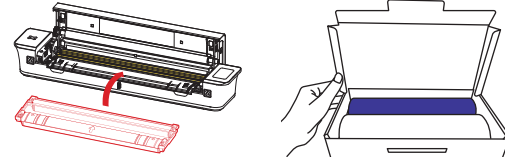


### 6.3 卷纸+卷装碳带组合

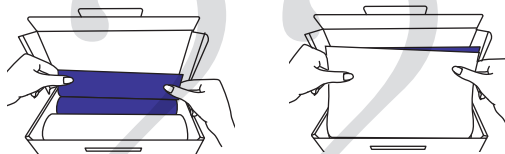
- 01 长按电源键3秒开机，直到指示灯亮起
- 02 双手同时按下开盖按键，打开上盖



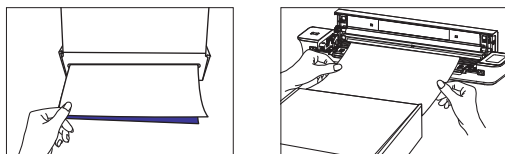
- 03 打印机内放入套装中附赠的碳带空支架
- 04 取出全新纸卷套装，打开套装



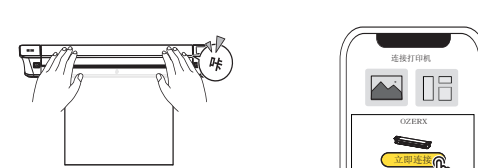
- 05 揭开卷装碳带包装，将碳带纸头拉出
- 06 揭开纸卷，将纸卷纸头拉出与碳带顶端平齐，粘合纸张



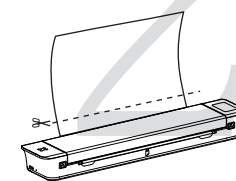
- 07 将粘合好的纸张从配件盒出口拉出
- 08 将配件盒放置到打印机进纸口处，从配件盒出口处将纸头拉出，与指示灯位置平齐



- 09 放下上盖，双手放在上盖两端，同时摁下，听到“咔”一声，合盖完成
- 10 连接手机APP或电脑驱动，开始打印



- 11 打印完成后，使用剪刀从出纸口处裁剪打印完成的纸张



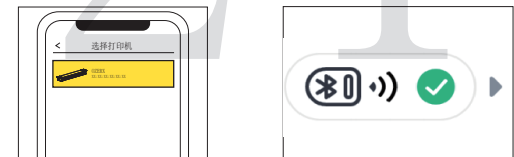
## 7. 更多连接方式

### 6.2 蓝牙连接

- 01 打开“Quick Stencil”App
- 02 点击右上角蓝牙连接符号



- 03 选择您的打印机
- 04 设备连接成功



① 开启蓝牙权限，即可快速搜索并连接打印机

## 8. Warranty Card

- Return  Exchange  Repair

User Info	Name:	Sex:	Phone:
	Address:		
Product Info	Purchase date:		
	Product order number:	Product Serial Number:	
Requirements of return/replacement/repair	Reason description:		
Maintenance records	Failure condition:	Maintenance person:	
	Handling situation:	Delivery date:	
	Maintenance ticket number:	Delivery date:	

### Product certification

Inspector: \_\_\_\_\_ Delivery date: \_\_\_\_\_

## 9. FCC Warning

1. This device complies with Part 15 of the FCC Rules. Operation is subject to the following two conditions:

- (1) This device may not cause harmful interference, and
- (2) This device must accept any interference received, including interference that may cause undesired operation.

2. Any Changes or modifications not expressly approved by the party responsible for compliance could void the user's authority to operate the equipment.

NOTE: This equipment has been tested and found to comply with the limits for a Class B digital device, pursuant to Part 15 of the FCC Rules. These limits are designed to provide reasonable protection against harmful interference in a residential installation. This equipment generates uses and can radiate radio frequency energy and, if not installed and used in accordance with the instructions, may cause harmful interference to radio communications. However, there is no guarantee that interference will not occur in a particular installation.

If this equipment does cause harmful interference to radio or television reception, which can be determined by turning the equipment off and on, the user is encouraged to try to correct the interference by one or more of the following measures:

- Reorient or relocate the receiving antenna.
- Increase the separation between the equipment and receiver.
- Connect the equipment into an outlet on a circuit different from that to which the receiver is connected.
- Consult the dealer or an experienced radio/TV technician for help.

### FCC Radiation Exposure Statement

The device has been evaluated to meet general RF exposure requirement. The device can be used in portable exposure condition without restriction.

## 10. ISED Warning

This device contains licence-exempt transmitter(s)/receiver(s) that comply with Innovation, Science and Economic Development Canada's licence-exempt RSS(s).

Operation is subject to the following two conditions:

- (1) This device may not cause interference.
- (2) This device must accept any interference, including interference that may cause undesired operation of the device.

### IC RF exposure statement:

The device has been evaluated to meet general IC RF exposure requirement.

The device can be used in portable exposure condition without restriction.

### 特别说明

本司全权负责本说明书的修订与说明，并尽量确保说明书的内容正确无误。产品若有技术改进，恕不另行通知；本说明书中的产品、配件、软件界面等插图均为示意图，仅供参考。由于产品的更新与升级，产品实物与示意图可能略有差异，请以实物为准。